

Slamlock™ Mechanical

Description

The Prosafe Slamlock combines the features of trapped keys with tongue actuated interlocks. When the actuator is inserted into the interlock (guard closed), the trapped key can be rotated and removed. With the key free, the actuator can not be removed thus locking closed the guard door. **The trapped key must be re-inserted and rotated 90° to unlock the guard.**

Slamlocks are manufactured in 316L stainless steel to provide a rugged, industrial grade method of interlocking guard doors.

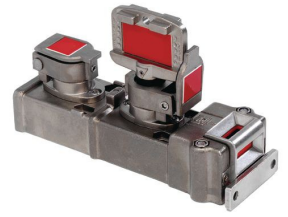
One advantage of the slamlock is that there is no need to run power wires to the gate. Power is disconnected by a trapped key on a control panel or by a Prosafe RKS type unit and the key is then hand-carried to the gate by the operator.

The Single-key Slamlock (SSL) is used to interlock hatches, guards and doors where full body access is not required.

Dual-key Slamlock (DSL) is similar to the single key version but has a secondary key to allow "two key in" or "key exchange" conditions. The key exchange version may be used where whole body access is required, as the secondary key can be used as a personnel key.



Single



Dual

Features

- 316L stainless steel construction
- Selection of actuator types available
- Direct drive operation
- Replaceable code barrel assembly
- Fitted with tamper resistant screws
- Weatherproof stainless steel dust cap as standard
- Multiple key options

The Prosafe Advantage



Stainless steel construction.

Safety Ratings

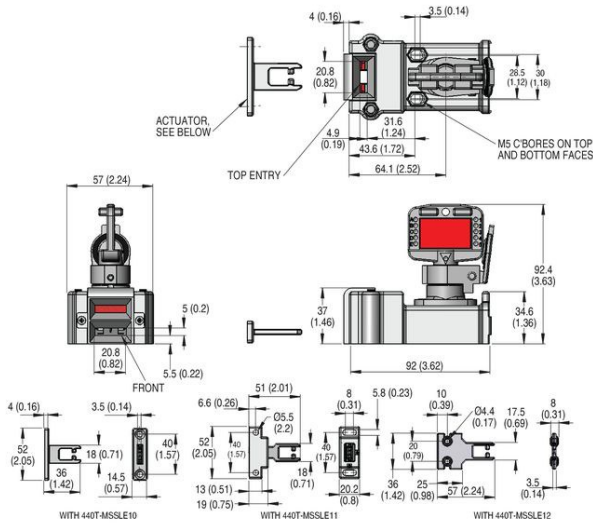
Standards	EN1088, IEC/EN60947-5-1, GS-ET-19, ISO12100-1&2, ISO14119, AS4024.1
Category	Cat. 1 per EN 954-1 (ISO 13849-1) Suitable for Cat. 2, 3, or 4 systems
Certifications	CE Marked for all applicable directives and BG; C-Tick not required
Operating Characteristics	
Operating Temperature [C (F)]	-40...+200 ° (-40...+392 °)
Mechanical Life	In excess of 100,000 operations under normal working conditions
Code Barrel Life	Tested to 100,000 operations
Environmental & Physical Characteristics	
Shear Force to Key	15.1 k•N (3398 lbs), max.
Torque to Key	14 N•m (124 lb•in), max.
Relative Humidity	95%
Weight [kg (lb)]	Single Key: 0.76 (1.68) Dual Key: 1.33 (2.93)
Ambient Temperature [C (F)]	-10...+50 ° (14...122 °)
Material	316L stainless steel
Mounting	SSL: 2 x M5 counterbored from top or 2 x M5 from underside with nuts DSS: 4 x M5 counterbored from top or 4 x M5 from underside with nuts
Holding Force, Max.	2000 N (450 lbs)

Type	Actuator Type	Trapped Key Condition	Cat. No.
Single key	Standard	Key trapped to release actuator	440T-MSSLE10*
	Flexible		440T-MSSLE11*
	Flat		440T-MSSLE12*
Dual key	Standard	Primary key trapped, secondary key free to release actuator	440T-MDSLE10* ⊗
	Flexible		440T-MDSLE11* ⊗
	Flat		440T-MDSLE12* ⊗
	Standard	Both keys trapped to release actuator	440T-MDSLE20* *
	Flexible		440T-MDSLE22* *
	Flat		440T-MDSLE23* *
Dual with secondary ejector key	Standard	Primary key trapped, secondary key free to release actuator	440T-MDSLJ10* ⊗
	Flexible		440T-MDSLJ11* ⊗
	Flat		440T-MDSLJ12* ⊗

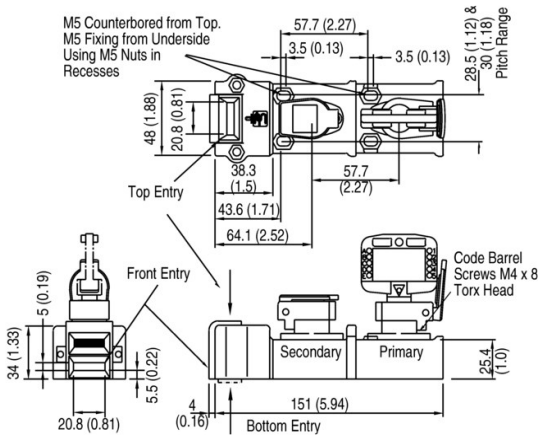
* Substitute the desired primary code for this symbol (key not included). See **Key Coding** for code selection.
 ⊗ Substitute the desired secondary code for this symbol (key included). See **Key Coding** for code selection.

Dimensions are shown in mm (in.). Dimensions are not intended to be used for installation purposes.

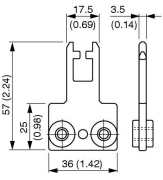
Single Key Slamlock



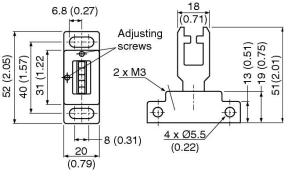
Dual Key Slamlock



Flat Actuator



Flexible/Adjustable Actuator



Standard Actuator

